

# WHICH SHOW AM I IN?

During the month of May, class and rehearsal schedules will vary by show, so we can work with certain groups of dancers one at a time. This helps us look at each section of the performance and focus on specific corrections.

**Review the lists below to see when your dancer is needed at rehearsal.**

## **Premiere Show: A Phantom's Clue**

Levels 2, 3, 4

**Performance:  
Saturday May 16th**

@ The Elsinore

### **Act One**

Ensemble: Principals

Advanced

Intermediate 3

Intermediate 4

Contemporary 2

Contemporary 3

Hip Hop 2

### **Act Two**

Ensemble: Principals

Advanced

Contemporary 4

Hip Hop 3

Hip Hop 4

## **Debut Show: The Hollow Tree**

Beginning & Level 1

**Performance:  
Sunday May 31st**  
@ The Grand Theater

### **Act One**

Ensemble: Apprentices

Ensemble: Soloists

Beginning 2 (Fri.)

Beginning 3

Beginning 1 (Mon. + Fri.)

### **Act Two**

Ensemble: Apprentices

Ensemble: Soloists

Intermediate 1 + 2

Hip Hop 1

Beginning 2 (Mon.)

Contemporary 1

SUNDAY	MONDAY	TUESDAY	WEDNESDAY	THURSDAY	FRIDAY	SATURDAY
Regular Studio Classes <b>The Phantom's Clue:</b> Principals, Advanced, Intermediate 3 & 4, Contemporary 2, 3, & 4, Hip Hop 2, 3, & 4 <b>The Hollow Tree:</b> Soloists, Apprentices, Intermediate 1+2, Contemporary 1, Hip Hop 1, Beginning 1, 2, & 3						
3	4	5	6	7	8	9
	4-5 PM Beg. 2 (M) 5-6 PM Int. 1 & 2 6-9 PM Adv., Prin., Con. 4, Hip Hop 4	5-6 PM Con. 1 5-7 PM Int. 3 & 4, Con. 2 & 3	5-6 PM Beg. 3 5-6:30 PM Technique 1 6-8 PM Act 1	4-5 PM Hip Hop 1 5-7 PM Act 2	4-5 PM Beg. 1 (M+F) 5-6 PM Beg. 2 (F) 5:30-7 PM Appren- -tice & Soloists	
10	11	12	13	14	15	16
	4-5 PM Beg. 2 (M) 5-6 PM Beg. 1 (M+F) 5-6 PM Int. 1 & 2 6-8:30 PM Full Run Through	<u>Dress Rehearsal</u> <u>@_Elsinore</u>	5-6 PM Beg. 3 5-6:30 PM Technique 1	4-5 PM Hip Hop 1 5-7 PM Full Run Through & Awards	5-6 PM Beg. 2 (F) 5-7 PM Apprentice & Soloists	<b>Show</b> <b>@_Elsinore</b>
17	18	19	20	21	22	23
	4:30-6:30 Beginning 1, 2, & 3		5-7 PM Full Run Through (No Beg. Classes)		5-7 PM Apprentice & Soloists	
24	25	26	27	28	29	30
		<u>Dress Rehearsal</u> <u>@_Grand Theater</u>		5-7 PM Full Run Through	5-7 PM Apprentice & Soloists	
<b>Show @</b> <b>Grand Theater</b>						
31						

# How to Do A Ballet Bun



1. Brush your hair back into a tight ponytail—position it on the crown (highest point) of your head—and secure with a hair elastic.
2. Twist your ponytail tightly as you wrap it around your ponytail bun to keep stray ends from breaking free. You can also braid your ponytail to help keep everything together.
3. Tightly wrap a hair net that matches your hair color over your ballet bun to contain any stray ends.
4. Use U-shaped hairpins or bobby pins to hold the hair net and bun in place. Direct each pin down toward the scalp at the edge of the bun, grabbing some bun hair. Then, “scoop” a bit of the scalp hair with the tips as you direct the pin into the base of the bun, parallel to the head.
5. Use gel or hairspray to slick down any fly away hairs or loose ends.\* Bobby pins can also be used at the back of the head to pin short hairs up towards the bun.

\*Use a small amount of baking soda in the shower to help break up gel & hairspray when washing your hair after the performance!

# How to Apply Stage Make-Up

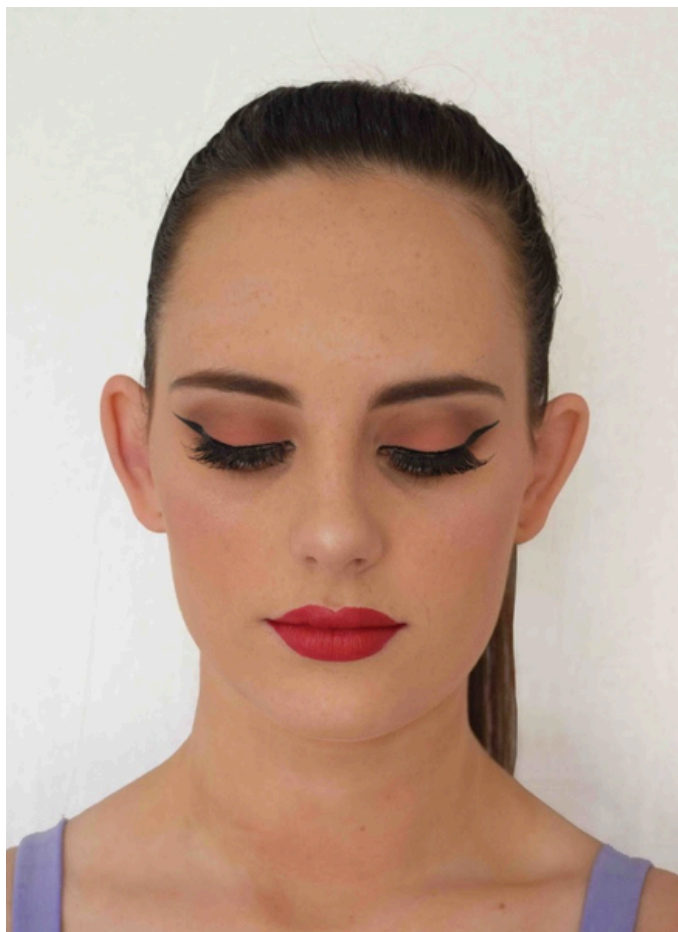
Stage make-up is very different from regular makeup because the harsh stage lights can drown out features, making it important to exaggerate and draw out lines from the face. Dancers of all genders **must** wear make-up when performing.

1. Start with a clean, freshly washed face. (Optional: exfoliate and moisturize after washing. Add foundation primer for long-lasting makeup.)

2. Apply full coverage **foundation** all over the face, blending the color into your neck and hairline for an even application. Choose a product one or two shades darker than your regular skin tone.

3. Apply **contour** to the face to prevent from looking "flat" from the stage lights. Apply a darker color below the cheekbones, on the sides of nose, and at the temples. Apply a lighter color above cheekbones, on the bridge of the nose and add a **concealer** under the eyes. Blend the contour with a damp blending sponge or a blending makeup brush. (Optional: Color in the eyebrows if they are light or if you want a more defined shape. Make sure your eyebrow pencil or gel is similar to the color of your hair.)

4. Apply a light color **eye shadow** to the crease of the eye and the brow bone to add a highlight. Add a neutral color to the eye crease, and a dark color to the corner creases of the eye to create a smoky look. Make sure you blend these in to create a seamless transition from colors.



5. Line the eye both top and bottom using a **pencil or liquid eyeliner** so the whites of the eyes stand out on stage. Add two "wings" to the top line to over exaggerate the shape of the eye.

6. Apply **mascara** to the top and bottom lashes. (Optional: Apply false lashes for a more dramatic look.)

7. Apply **blush** to the cheeks making sure the color is dark enough to be seen from stage. Make sure this is blended in and doesn't look like two pink circles on the cheeks. Tip: smile big when applying blush to exaggerate the "apple" of the cheek where the blush should be applied. (Optional: Additionally add highlighter above the cheekbones and on the bridge of the nose for a glow. This creates a sparkle when the light hits the face.)

8. Powder the entire face to set the makeup, apply a setting spray if you have one.

9. Apply **red lipstick** color to the entirety of the lips. Check with your instructor if you are unsure of the exact color to use.

\*Make sure to remove your makeup thoroughly at the end of the day to prevent skin irritation!

# TIPPY TOE DANCE STUDIO

## Performance Costumes

### Dancers:

Try on your costume on at home & have it checked by a grown-up for correct fit, missing pieces, or other issues.

### Parents:

Notify the studio of any issues as soon as your dancer receives their costume.

## SIZING & ALTERATIONS

Dancewear sizes often differ from regular clothing, and vary between manufacturers. Some pieces (like leotards) are meant to fit snug, others are meant to stay loose or flowy. Costumes arrive partially unfinished for customization purposes. Minor alterations, such as hem or strap adjustments, are common and need to be completed at home. *Parents - this is a good task for grandparents or other loved ones looking for ways to support their favorite dancer!*

Costumes that are extremely ill-fitting should be brought back to the studio right away. Our staff will have you try the costume on and discuss alterations or replacement options.

## STORAGE

Once costumes are approved, they need to be hung in a parent's closet - *they should not be worn again until dress rehearsal*. Hang your costume with care to prevent wrinkles - many costume fabrics cannot be ironed. If your costume has a layered skirt or tutu, hang the garment upside down from the leg holes and fluff each skirt layer.

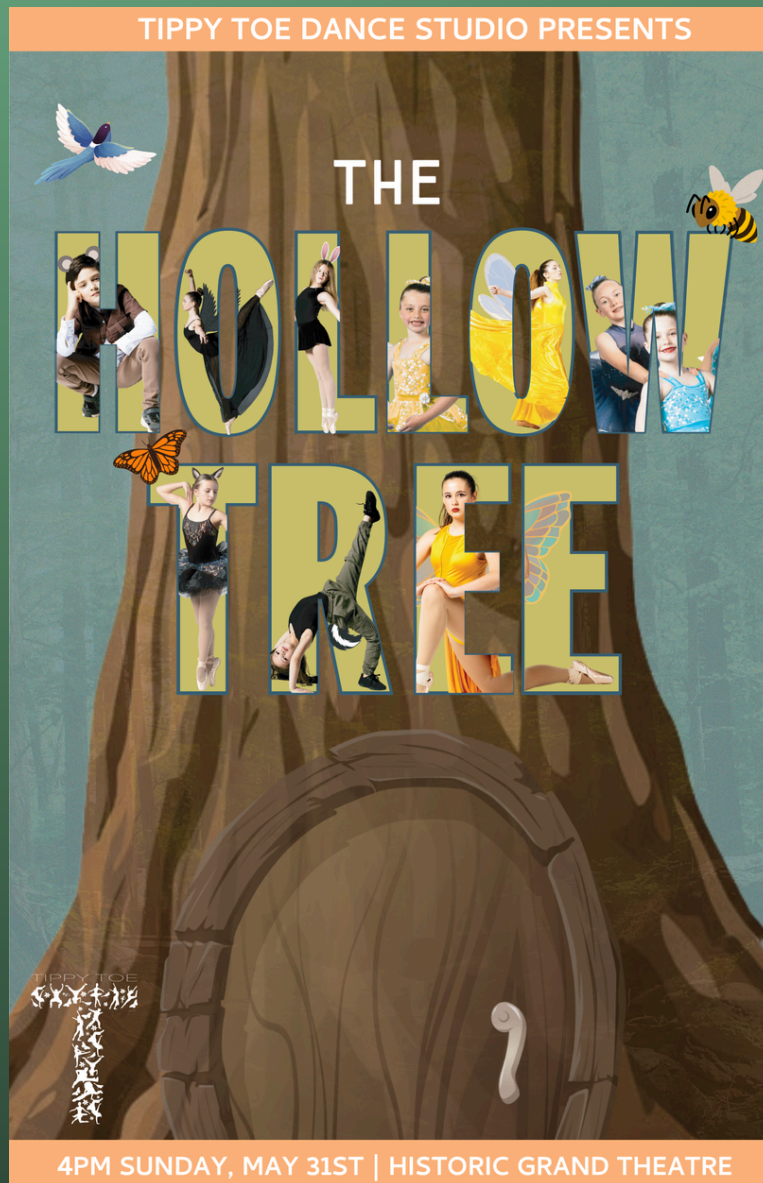
## THE COMPLETE LOOK

But wait, there's more that goes into getting your dancer ready for the stage!

**Hairstyles** are determined by class. All hairstyles must be securely pulled away from the face using hairspray or gel. All students, regardless of gender, must wear **stage make-up** for both dress rehearsal and the performance.

**Tights** must be CLEAN with no rips, runs, or tears. We suggest using a brand-new pair. **Shoes** must be CLEAN. **Dancer's tights and shoes should match their skin tone**. All black sneakers & socks for hip-hop unless otherwise noted - no white decals/soles. We may ask families to provide **basics** (plain black leggings, plain white tee, etc.) to help us keep costume fees low.

# Debut Show: THE HOLLOW TREE



After a sunny picnic, two friends follow a frantic bunny into a hollow tree, only to find themselves drafted as honorary forest helpers in a world full of whimsical animals!

To kick off the Spring Awakening, they must help the bunny rouse a pack of sleepy animals and scramble to set up the season's biggest party.

# **HOLLOW TREE REHEARSAL SCHEDULE:**

**AFTER MAY 15th, REHEARSALS WILL TAKE THE PLACE OF  
REGULAR CLASSES FOR BEGINNING & LEVEL 1**

**May 1<sup>st</sup> - 15<sup>th</sup> : Follow the regular class schedule, unless specified below.**

## **Apprentice & Soloist Combined Classes**

May 1st, 15th, 22nd, 29th 5:00-7:00 PM

May 8<sup>th</sup> 5:30-7:00 PM

## **Beginning 1 Combined Classes**

Friday May 8th 4:00-5:00 PM

*No class on Monday May 4th*

Monday May 11th 5:00-6:00 PM

*No class on Friday May 15th*

## **Contemporary 1**

*No class on Tuesday May 12th*

-----

## **Monday May 18th 4:30-6:30 PM**

Beginning 1, 2, 3 Rehearsal

## **Wednesday May 20th 5:00-7:00 PM**

Full Run Through - *No Beginning Classes*

## **Tech Rehearsal @ The Grand Theater**

### **Tuesday May 26th 4:30-8:00 PM**

*Times will be specified by class as we get closer to May.*

## **Thursday May 28th 5:00-7:00 PM**

Full Run Through @ Studio

## **Performance & Gathering @ The Grand Theater**

### **Sunday May 31st - Matinee**

*Times will be specified as we get closer to May.*

# Hollow Tree Spotify Playlist



# Ticket Information for **THE HOLLOW TREE**

**On Sale**

*Apr. 18th  
at 10:00 AM*

Main Floor Front **\$27.50**

Main Floor Back **\$21.50**

Balcony Front **\$25.50**

Balcony Back **\$19.50**

**\*No general admission = No lines at the door! All seating is reserved.\***

Please note that per the Grand Theater's policy, our studio does not oversee ticket sales. If you have any questions or concerns specifically about tickets or ticket purchases, please reach out to the Grand Theater.

*Ticket price includes a theater facility fee, but additional site service fees may apply at checkout.*

---

## Why do we charge for tickets?

We are a performance-based studio - our shows are more than just a recital or showcase. Students get to experience a true production from auditions to final bows.

You will also notice that our audience is made up of more than just our studio families - our community looks forward to our original productions each year, and attend our shows to cheer your dancers on!

## Ticket Raffle & How To Enter

Simply send or show us a copy of your receipt (a screenshot works great). Friends & family ticket purchases count! For every ticket sold, your child will receive one entry into the raffle drawing.

Our dancers always have a blast with our raffle drawing - prizes include TTDS merch, studio snack cards, and gift cards to their favorite stores! The raffle drawing will take place on Thursday May 14<sup>th</sup> during the Phantom's Clue Full Run Through rehearsal. If your dancer does not attend this rehearsal, we will save their prize for them!

## What To Wear:

- Please wear clean, fitted dance attire that follows studio dress code.
- **Do NOT bring your costume to rehearsal unless specified.**
- Hair should be clean and secured away from the face in the required style.
- No nail polish or jewelry of any kind.

## What To Bring:

- Full water bottle
- No-mess, hearty snack (granola bars, trail mix, jerky, etc.)
- Extra hair ties & bobby pins
- All dance shoes
- Warm-up attire
- Quiet activities like books or tablets (no headphones, volume muted) are allowed for young dancers.

## What Happens During In-Studio Rehearsals?

During Rehearsal Week, dancers will have an assigned sitting area to place their personal items and wait with an instructor while other classes rehearse. While waiting to for their time to dance, we ask dancers to remain calm, quiet, and focused on the rehearsal - just like they will be expected to act backstage.

### “Stumble Through”

This is the first time most students will come together to rehearse. During our “Stumble Through”, we focus on getting dancers comfortable with the run of the show, backstage transitions, quick changes, etc. Our directors and instructors will help students work out any rough spots in choreography and make any last-minute adjustments to formations.

### “Clean Up”

Now that dancers are familiar with the run of the show, these “Clean Up” rehearsals are the last opportunity to focus on precise technique. The director along with the instructors will give corrections and last-minute improvements that can be achieved before performance. Dancers will learn curtain call (bows) if they haven’t already.

### “Full Run Through”

All dancers in Intermediate levels and above attend this rehearsal. We discuss expectations for being at the Elsinore, both on and offstage. Our goal in this rehearsal is to run the show exactly like we will on stage.

### “Final Run Through”

This “Final Run” is mostly a focus on soloists, narrative, and storytelling. Younger dancers do not come to this rehearsal to allow advanced levels the ability to work in greater depth.

## **Closed Rehearsals**

With the large number of dancers needed for each rehearsal and limited studio space, **our lobby will be closed to parents and observers during this week.**

Our studio phone (503.339.7964) will be available via text throughout the entire rehearsal, with a dedicated staff member monitoring and responding to messages. To limit disruptions, we will NOT be answering phone calls during rehearsal hours. For urgent needs or emergencies, please text first and we will give you a call back as needed.

For dancers that need assistance getting settled, one parent or grown-up may accompany them inside. In this case, we ask that you limit your drop-off to no more than 5-10 minutes. See parking information below.

Closed rehearsals are newer for our studio, but can be common with performance venues. We strongly believe this opportunity allows for our youngest dancers to practice being nervous away from their grown-ups, and gives our older dancers an atmosphere primed for focus and creative flow.

Thank you for trusting our team!